



# TITAN 900

Controls system software for horticultural facilities



---

A CONVIRON COMPANY





Argus Controls provides advanced climate control systems that are customized to each grower's requirements and are adaptable to their changing needs, enabling them to operate their facilities exactly the way they want.

*TITAN 900 – Argus' control system software – together with Titan controllers provide a powerful, integrated solution for managing your entire horticultural facility from greenhouse and physical plant operations to fertigation systems, grow rooms and growth chambers, nurseries and propagation zones – all from your central command center, networked PC or mobile devices.*

## TITAN 900 ENSURES SEAMLESS INTEGRATION AND CONTROL OF YOUR FACILITY

### CONTROL AND AUTOMATION

- Precision climate control
- Intelligent lighting control
- Advanced irrigation and fertigation
- Tracking for system security and audits

### COMPREHENSIVE DATA ACQUISITION

- Continuous recording of all settings, readings and crop parameters
- Collect data from advanced sensor systems for measuring light, carbon dioxide, oxygen, fruit loading, moisture, water flow, leachate volumes, spectral reflectance, and photosynthesis
- Full-featured graphing tool

### PERFORMANCE TRACKING AND EQUIPMENT OPTIMIZATION

- Monitored activity of devices: on/off cycles, total running times, maintenance reminders
- Monitored usage of energy and water relative to targets

### CONSTANT CONTACT

- 24/7 alarm monitoring of all critical conditions with quick detection of any deviations
- Automatic voice and email alerts
- Multiple alarm conditions and custom intelligent alarm models
- Custom monitoring solutions



### TITAN 900 MANAGES IT ALL

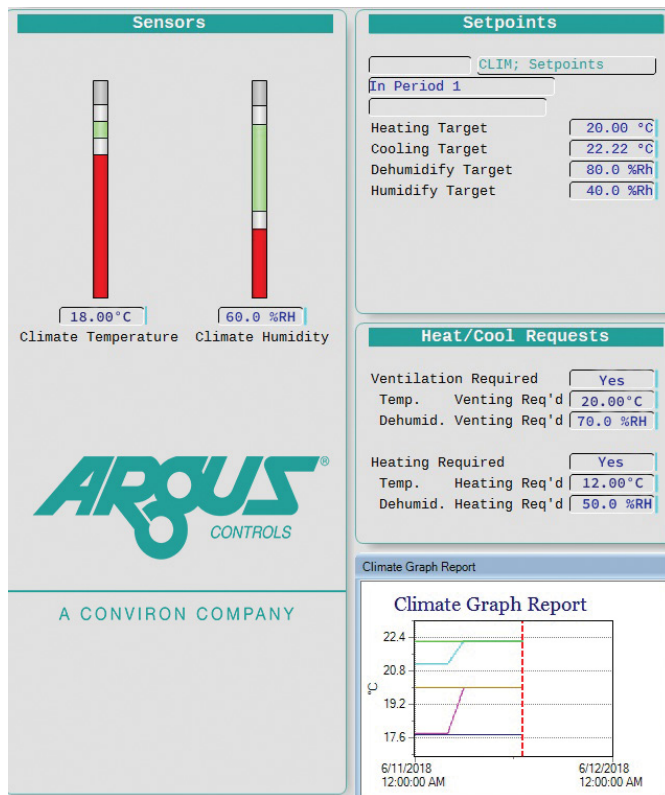
- Unit Heaters
- Exhaust Fans
- HAF fans
- Ridge and Side Vents
- Irrigation controls
- Lights
- Shading
- CO2 injection
- Hot water heat loops
- Boiler controls
- DLI/PAR Sensors
- HVAC + FCU

# KNOW YOUR OPERATION INSIDE AND OUT WITH TITAN 900, YOU HAVE COMPLETE UNDERSTANDING AND CONTROL OF YOUR FACILITY

Titan 900 offers an enhanced user experience with innovative visual controls and value-added features. The refreshed user interface uses color and layout strategies that can be customized to suit individuals' need for style and information.

## INTUITIVE VISUAL CONTROLS

Titan 900 is designed to de-clutter the interface, optimize visualization of your facility's data and focus your attention on what is important to you.



<b>Argus Navigator</b>	Easily access your most relevant information
<b>Argus Panels</b>	Organize the interface with adjustable layout containers
<b>Argus Proportional and Digital Controls</b>	Understand status of key parameters in a percentage view or with ON-OFF displays
<b>Argus Gauges and Indicators</b>	Link parameters and values to display a range or ON-OFF status of a specific parameter or value
<b>Argus Tables</b>	Customize tabular displays to link key parameters

## ENHANCED GRAPHS

The charting function in Titan 900 allows for better visualization and understanding of individual performance parameters and their relationship to each other. Graphs are embedded in the main application and can be opened in a new window or exported simplifying data analysis. Some of the enhancements to the graphing capabilities include:



**CHARTING MULTIPLE GRAPHS  
SIMULTANEOUSLY**



**ANNOTATIONS FOR SPECIFIC  
DATA POINTS**



**IMPROVED TOOLBAR FOR  
EASE OF USE**

## ARGUS GRAPHICAL LINK VIEW

For expert users who customize Titan 900 on their own, Link View provides the underlying linkages between multiple programming elements, which makes it easier to adapt the software to changes in the operation.

## ARGUS API

A newly developed Application Program Interface (API) works as a conduit that enables programmers and expert users to capture information from Titan 900 that will help them build and manage their own tools for analysis and decision making.

## CMP LINK

For sites with Conviron plant growth chambers and rooms with CMP6060 controllers, CMP Link is a new capability that allows full communication and control of those environments using Titan 900. CMP Link enhances the centralized control of Conviron chambers with features like:

- Table view
- Graphing information
- Near real-time information including alarms, schedules and programs, setpoints and sensors
- Retrieval and exporting of chamber data
- Time synchronization
- Remote interface

*\*Some of these features were already released in 2017*



## CONTACT US

Argus Control Systems Ltd.

Phone: 1-604-538-3531 Fax: 1-604-538-4728 US & Canada Toll Free: 1-800-667-2090

Web: [www.arguscontrols.com](http://www.arguscontrols.com) / E-mail: [argus@arguscontrols.com](mailto:argus@arguscontrols.com)



A CONVIRON COMPANY