

### DESCRIPTION

GATE-C3000 lets check, change parameters, and control a C3000 using a PC or mobile device (smartphone, tablet) as local mode (ethernet or wifi) and remote mode (www.itc-cloud-manager.com).



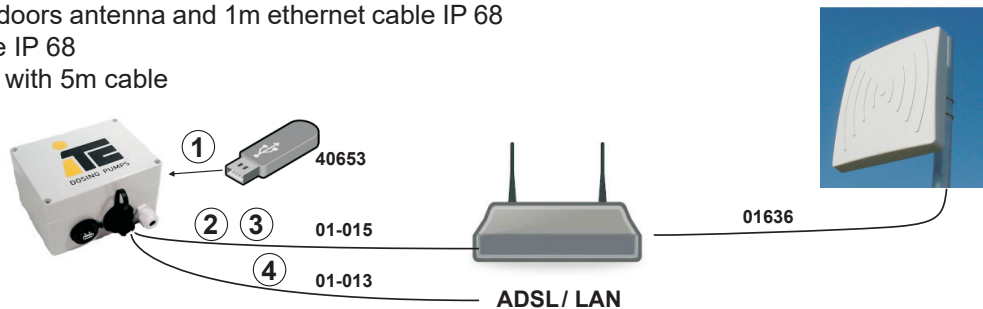
### TECHNICAL FEATURES

Supply voltage:	85-264Vac, 50/60Hz
Power:	6W
Temperature:	0 -45°C
Humedad relativa:	0-95% no condensation
Dimensions:	160x80x90mm
Conectivity:	Ethernet, ADSL connection, router 3G. Modem USB, accessory for good telephonic reception without outdoors antenna, Wifi, for a direct connection using a tablet.

Connections:	wifi: password:webscada http://1.2.3.4:7777	<table border="1"> <tr> <td>A</td><td>B</td><td>-</td><td>+</td><td>+</td><td>-</td><td>L</td><td>N</td> </tr> <tr> <td>RS</td><td>IN</td><td>dry</td><td>OUT</td><td>IN</td><td>100-240</td><td></td><td></td> </tr> <tr> <td>485</td><td>contact</td><td></td><td>12Vdc</td><td>Vac</td><td></td><td></td><td></td> </tr> </table>	A	B	-	+	+	-	L	N	RS	IN	dry	OUT	IN	100-240			485	contact		12Vdc	Vac			
A	B	-	+	+	-	L	N																			
RS	IN	dry	OUT	IN	100-240																					
485	contact		12Vdc	Vac																						

### ACCESORIES

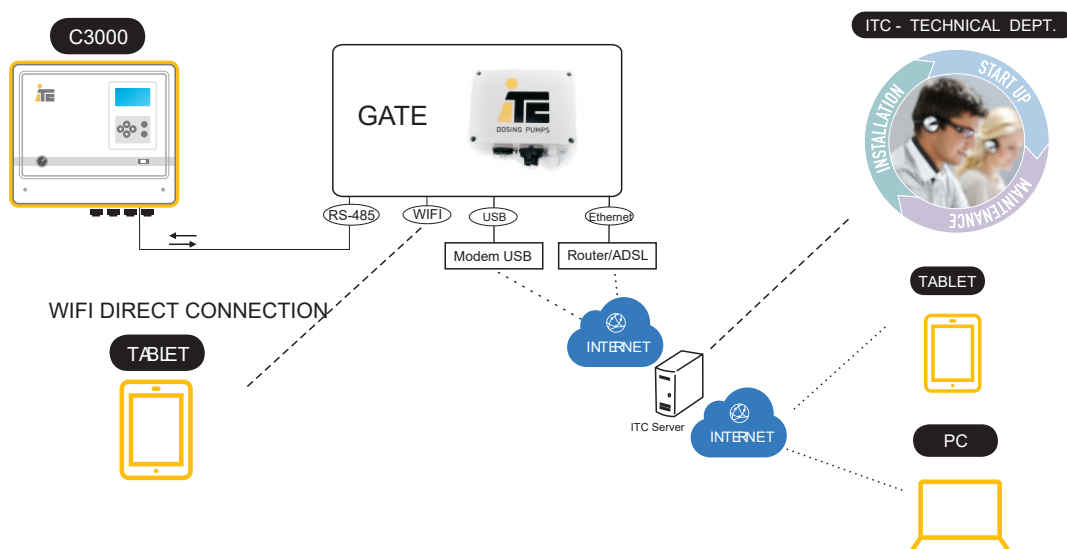
- 40653 Módem USB 3G
- 01-015 Router 3G with indoors antenna and 1m ethernet cable IP 68
- 01-013 1m ethernet cable IP 68
- 01636 Outdoors antenna with 5m cable



#### OPTIONS:

- GATE(01-001)+ modem USB(40653), for good reception.
- GATE(01-001)+ Router 3G (01-015), for medium reception.
- GATE(01-001)+ Router 3G (01-015) + outdoors antenna (01636), for poor reception.
- GATE(01-001)+ ethernet cable (01-013), to connect at the customer LAN.

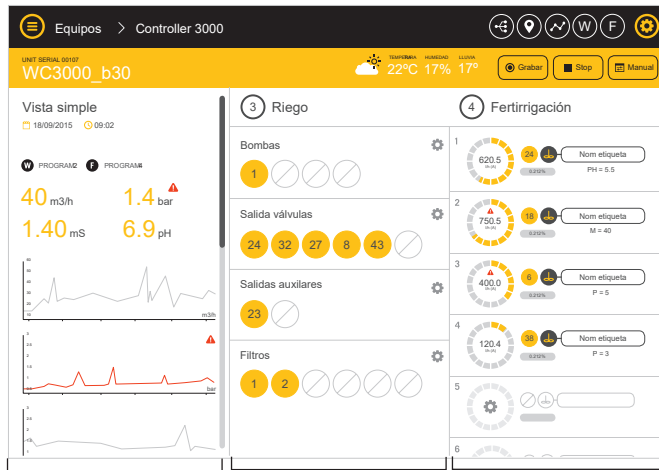
### GENERAL COMMUNICATION SCHEAM



### FUNCTIONALITIES:

To check change parameters, and control a C3000 can be done using a web browser (Explorer, Firefox, Chrome, Safari) in real time.

CONTROL PANEL: Real time readings.



Readings: Flow, Pressure, EC, and pH. Irrigation active program. Dosing pumps and its flow.

### DATA LOGGER



Data is stored inside the GATE, in the Cloud server <http://www.itc-cloud-manager.com/>. Registers of the data are created using the standard XML. It can be imported directly from an Excel datasheet.

### DATA LOGGER



Data is stored inside the GATE, in the Cloud server <http://www.itc-cloud-manager.com/>. Registers of the data are created using the standard XML. It can be imported directly from an Excel datasheet.