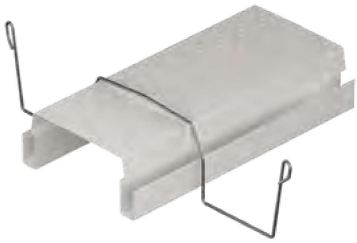


Stem supports

Stems are held together and kept off the ground by stem supports on both sides of the gutter. Depending on the type of growing gutter and the situation, we can supply various models of stem supports.



5.3.1



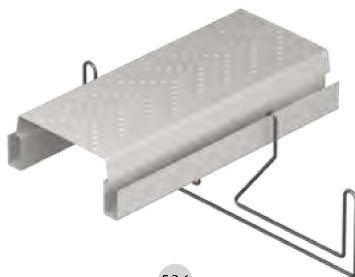
5.3.2



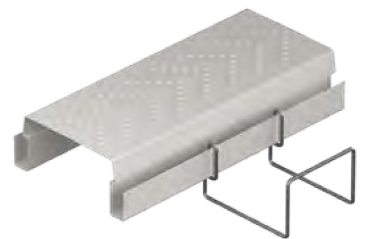
5.3.3



5.3.5



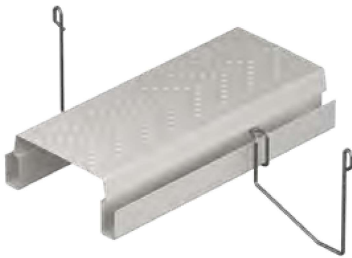
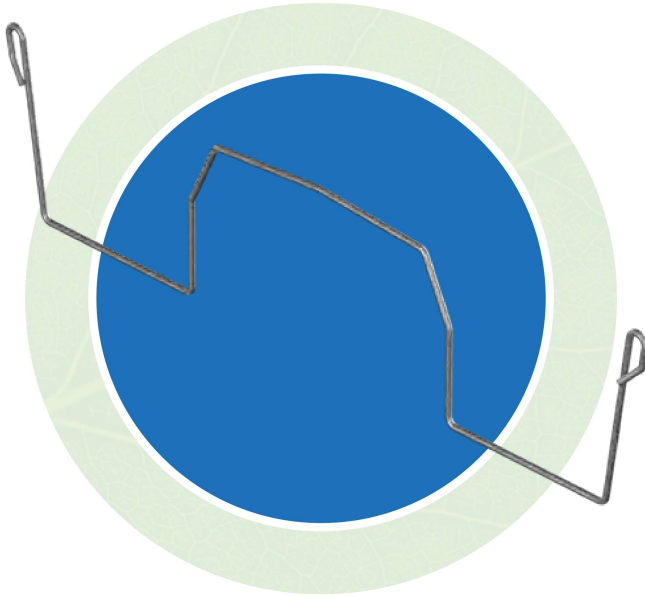
5.3.6



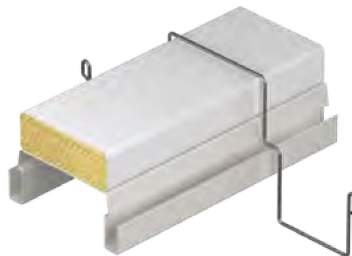
5.3.7

Index

- 5.3.1 Stem supports supporting on gutter
- 5.3.2 Stem supports hanging sidegable
- 5.3.3 Stem supports clamped under gutter
- 5.3.4 Stem support, clamped, with wire guide
- 5.3.5 Stem support, suspended above the two drain channels with wire support
- 5.3.6 Stem support hanging
- 5.3.7 Stem supports hanging sidegable
- 5.3.8 Stem support on the substrate mat
- 5.3.9 Stem supports hanging grow pipe single
- 5.3.10 Stem supports hanging grow pipe double



5.3.4



5.3.8



5.3.9



5.3.10