

# RW400 Motor gearboxes



The RW400 motor gearboxes are maintenance-free, compact drive units for operating ventilation, screen and lifting systems in greenhouses and livestock houses. The easy-to-install RW400 motor gearboxes are enclosed in a housing with a sealed limit-switch system that has a high protection rating of IP55. The RW400 motor gearboxes are designed to operate at ambient temperatures between 0 and 60 °C.

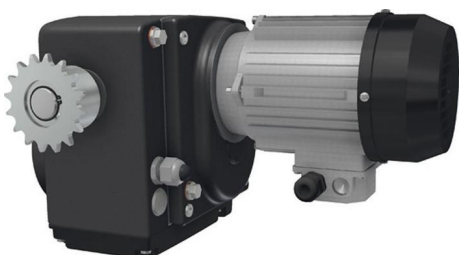
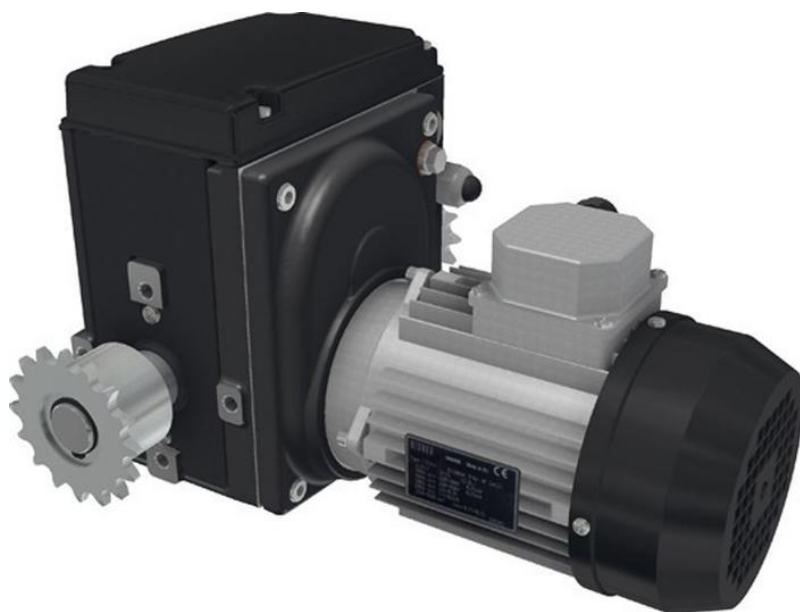
All RW400 motor gearboxes feature a self-braking worm gear transmission. The RW motor gearbox's self-braking worm gear transmission ensures that the output shaft is braked when the drive unit is stopped. The combination of carefully matched pinion and worm reductions results in a very quiet mechanical transmission.

The RW400 motor gearboxes feature a patented integrated linear limit-switch system with duty and safety switches having excellent switching precision. The maximum switching range of the limit-switch system equates to 86 revolutions of the drive shaft. The optional RPU Positioning Unit accurately monitors the current position of a drive system and transmits this data back to your climate computer or controller. This position feedback can also be achieved using an installation set with a potentiometer.

The RW400 motor gearboxes are finished with a graphite grey powder coating and are supplied including fixing bolts and spring washers.

## RW400 Motor gearboxes:

- Drive torque up to 400Nm at 50 Hz and 60 Hz mains frequencies;
- Rotation speeds of 1 to 5 rpm at 50 Hz, 1.2 to 6 rpm at 60 Hz mains frequency;
- Suitable for intermittent duty, duty class s3-35%, duty cycle maximum 25 minutes;
- Fitted with 16-tooth 5/8"x3/8" zinc-plated sprocket for chain couplings;
- Manual drive enabled by means of a hexagon socket in the electric motor shaft;
- Electric motors are standard tropic-proof and conform to protection class IP55;
- Available with 3-phase electric motors, 400 V at 50Hz (eurovoltage, EM type A);
- Or with 3-phase electric motors with CSA and/or UL approval, 208-415V at 50/60 Hz and 415-480V at 60Hz (wide voltage, EM type B);
- Or with 3-phase electric motors with CSA approval, 600V at 60Hz (EM type C);
- Or with 1-phase electric motors, 230V at 50/60 Hz (EM type D, E);
- Or with 1-phase electric motors with CSA and/or UL approval, 115 V at 60Hz (EM type F, G);
- Other specifications available on request.



# RW400 Motor gearboxes



Art. no.	Description	[m] kg	[M] 50Hz Nm	[n] 50Hz /min	[M] 60Hz Nm	[n] 60Hz /min	EM	F -	PTC	CSA UL	EM nr
502200	RW401-12\400\3\86	31,5	400	1,0	400		A	3	•		763020
502206	RW401-18\115\1\60\86\C	31,0			400	1,2	F	1	•	C	761219
502210	RW403-37\400\3\86	31,0	400	3,0	400	3,6	A	3	•		763040
502219	RW403-44\600\3\60\C\86	32,0	-	-	400	3,1	C	3		C	703632
502220	RW405-55\400\3\86	33,5	400	5,0	400	6,0	A	3	•		763060
502230	RW401-18\230\1\86	31,5	400	1,0	400	1,2	D	1			761016
502239	RW403-37\115\1\60\0C\C\86	33,0			360	3,6	G	1	•	C	761232
502240	RW403-37\230\1\0C\C\86	33,0	400	3,0	400	3,6	E	1		C	761032
502250	RW405-55\230\1\0C\C\86	36,0	400	5,0	400	6,0	E	1		C	761042
533400	RW402-25\400\3\86	31,0	400	2,0	400	2,4	A	3	•		763030
533411	RW402-25\230\1\0C\P\C\86	31,5	400	2,0	400	2,4	E	1	•	C	701021P
535630	RW402-25\208-480\3\CU\86	31,0	400	2,0	400	2,4	B	3	•	CU	764022
535660	RW403-37\208-480\3\P\C\86	32,0	400	3,0	400	3,06	B	3	•	C	764032
535690	RW405-55\208-480\3\P\C\86	34,5	400	5,0	400	6,0	B	3	•	C	764042
536690	RW405-66\600\3\60\C\86	34,5	-	-	400	6,0	C	3		C	703642
537300	RW401-12\400\3\86\IP55	31,5	400	1,0			A	3	•		763020
537310	RW403-37\400\3\86\IP55	31,0	400	3,0			A	3	•		763040
537315	RW405-55\400\3\86\IP55	33,5	400	5,0			A	3	•		763060
537320	RW401-12\208-480\3\CU\86\IP55	30,0	400	1,0	400	1,2	B	3	•	CU	764012
537325	RW402-25\208-480\3\CU\86\IP55	31,0	400	2,0	400	2,4	B	3	•	CU	764022
537330	RW403-37\208-480\3\C\86\IP55	32,0	400	3,0	400	3,06	B	3	•	C	764032
537335	RW405-55\208-480\3\C\86\IP55	34,5	400	5,0	400	6,0	B	3	•	C	764042
537340	RW401-18\230\1\86\IP55	31,5	400	1,0	400	1,2	D	1	•		761016
537345	RW402-25\230\1\C\86\IP55	31,5	400	2,0	400	2,4	E	1	•	C	761021
537350	RW403-37\230\1\C\86\IP55	33,0	400	3,0	400	3,6	E	1		C	761032
537355	RW405-55\230\1\C\86\IP55	36,0	400	5,0	400	6,0	E	1		C	761042
537360	RW401-18\115\1\60\C\86\IP55	31,0	-	-	400	1,2	F	1	•	C	761219