

Item No.	Specifications	Selection Chart	Performance Curve	Pump Dimensions	Sectional View
CDU70/0-1/2HP CDU70/1-3/4HP CDU70/3-1½HP CDU70/5A-2HP CDU70/5B-2HP CDU120/1-1HP CDU120/3-1½HP CDU120/5-3HP CDU200/1-1½HP CDU200/3-3HP CDU200/5-3HP	303	305,312	306	318	319



**\*Note:** Model CDU NSF/ANSI 61 Annex G listed

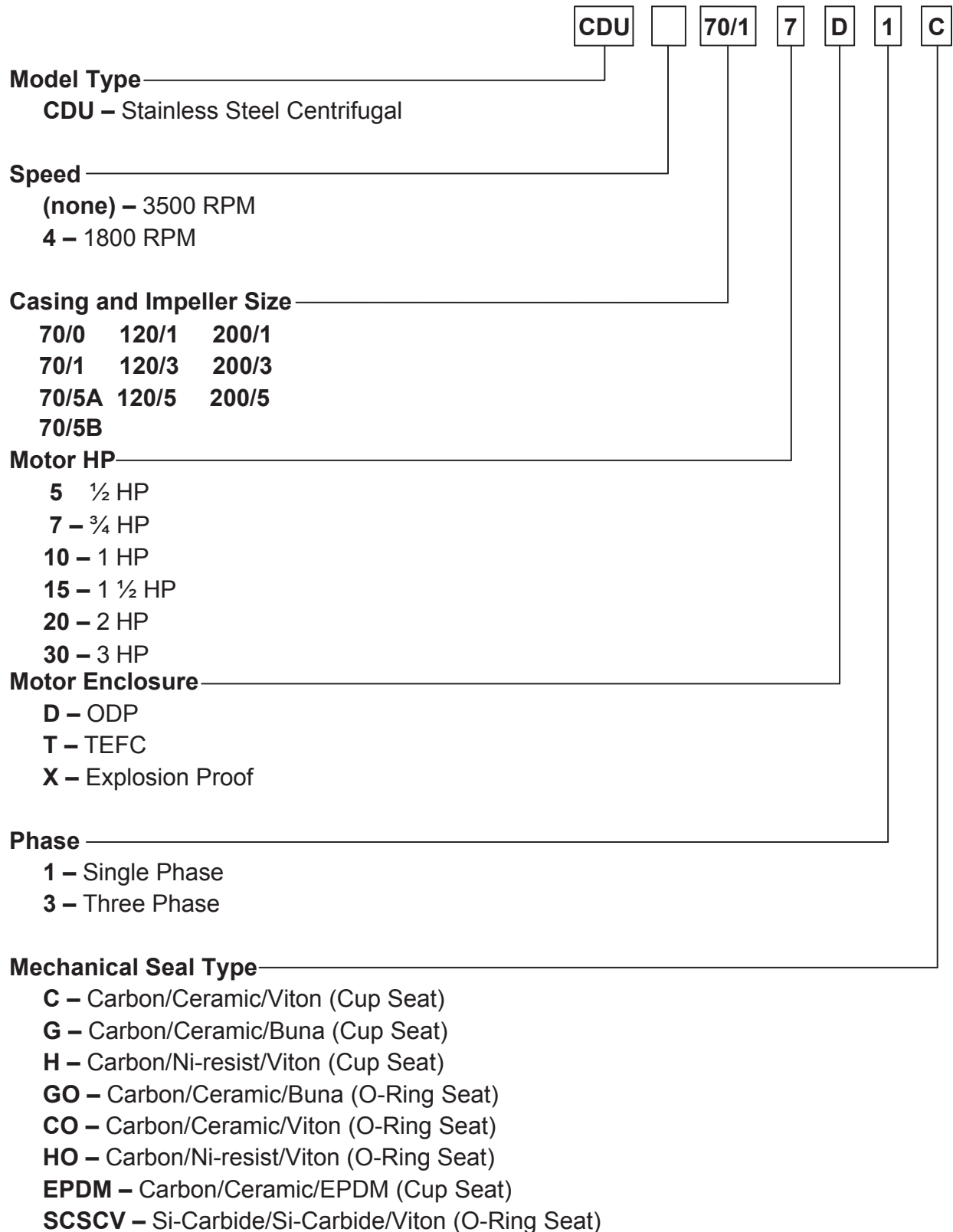
LISTED TO  
NSF/ANSI 61, ANNEX G



Model CDU

EBARA Stainless Steel Centrifugal Pumps

Model Designation



**Model CDU  
Specifications**

**EBARA Stainless Steel Centrifugal Pumps**

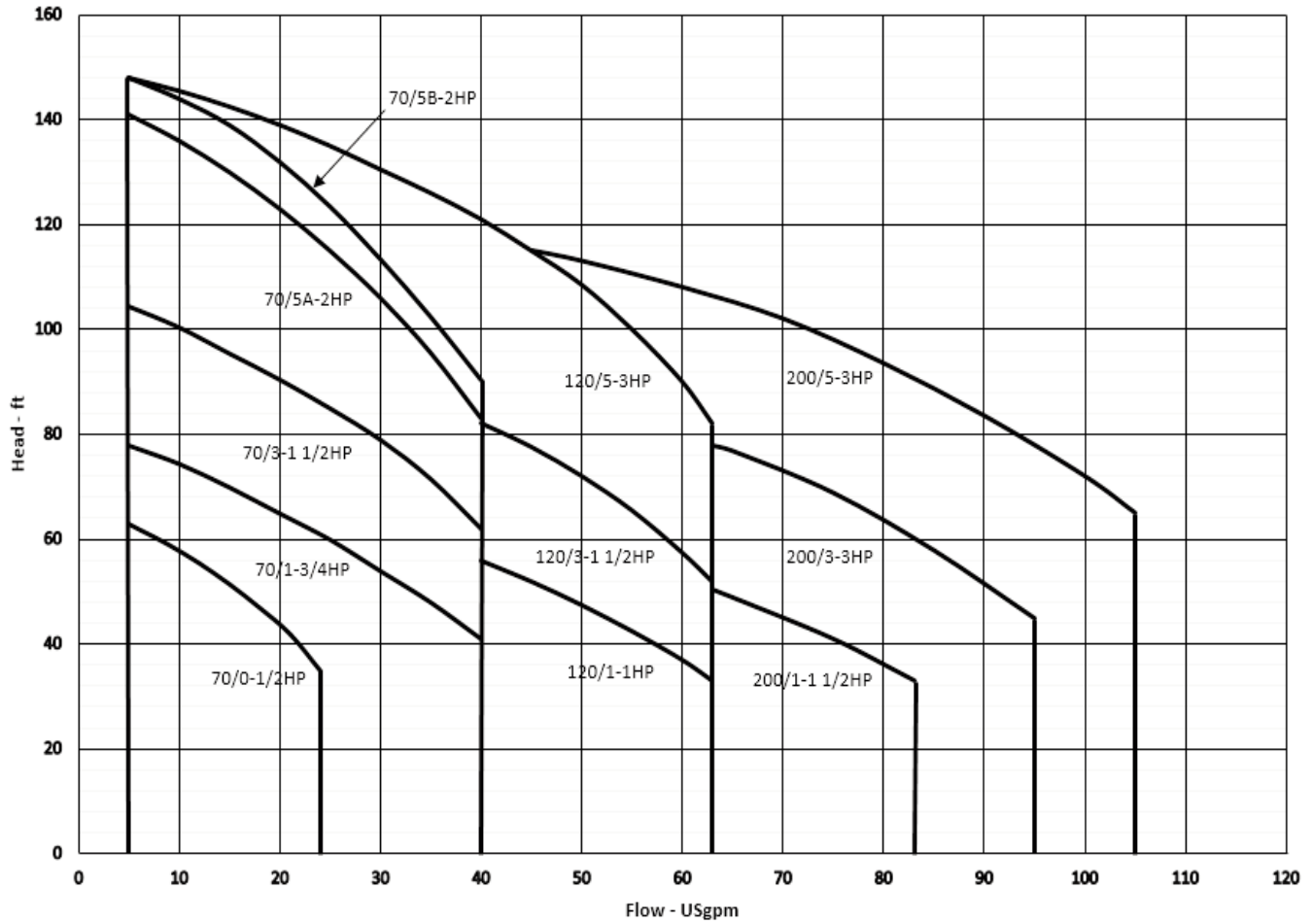
	Standard	Optional
<b>Size</b>		
Suction	CDU70 – 1¼" NPT thread CDU120 – 1¼" NPT thread CDU200 – 1½" NPT thread	
Discharge	1" NPT thread	
<b>Range of HP</b>	½ HP to 3 HP	
<b>Range of Performance</b>		
Capacity	5.5 to 95 GPM at 3450 RPM	
Head	26 to 144 feet at 3450 RPM	
<b>Liquid handled</b>		
Type of liquid	Water	
Temperature	212°F (100°C)	Max. 250°F (121°C) with optional high temperature seal
Max. working pressure	125 PSI (9 Bar)	
<b>Materials</b>		
Casing	304L Stainless Steel	
Impeller (closed type)	304L Stainless Steel	
Shaft	Stainless Steel	
Bracket	Aluminum	
Shaft Seal	Mechanical Seal – Type 21	High temperature version Mild chemical version
Bearing	Ball Bearing	
<b>Direction of Rotation</b>	Clockwise when viewed from motor end	
<b>Motor</b>		
Type	NEMA 56J Frame	
Speed	60 Hz, 3450 RPM (2 poles)	
Single Phase	TEFC – ½ HP to 3 HP ODP – ½ HP to 3 HP, 115/230V	Explosion proof – consult factory Washdown duty – consult factory
Three Phase	TEFC – ½ HP to 3 HP ODP – ½ HP to 3 HP, 208-230/460V	
Motor Protection	Built-in overload protection (single phase)	

Model CDU

EBARA Stainless Steel Centrifugal Pumps

Selection Chart

Nominal Speed 3450 RPM



## Model CDU

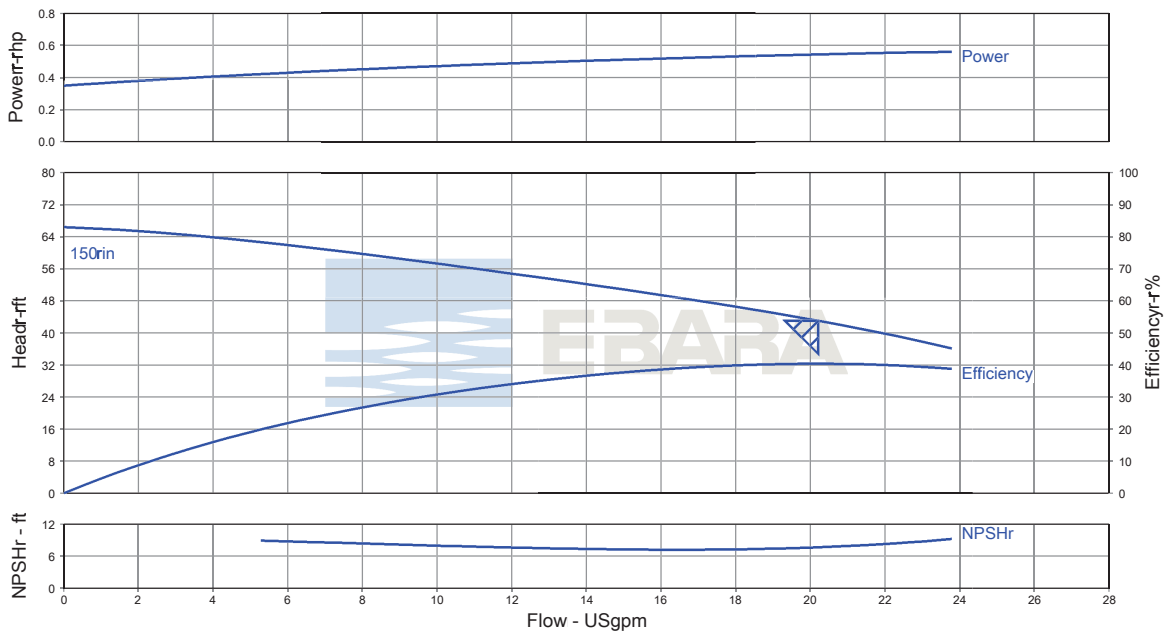
## EBARA Stainless Steel Centrifugal Pumps

### Performance Curves

#### CDU70/0-1/2 HP

Nominal Speed: 3450 RPM

Size: 1 x 1 1/4 x 4 1/2

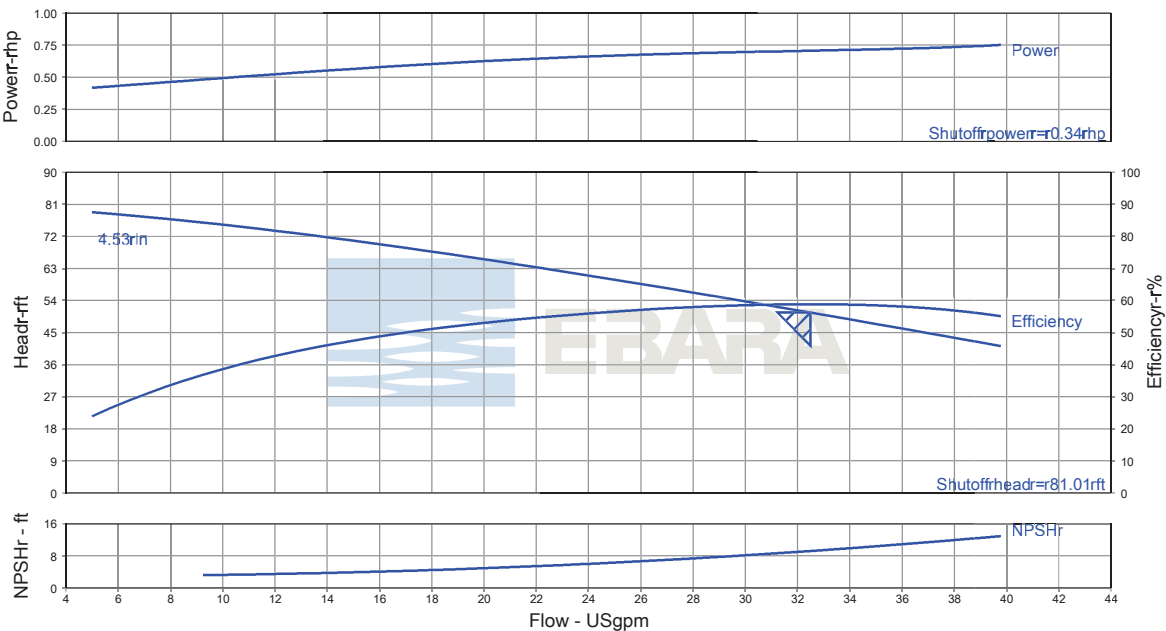


Item number	: 001	Product Description	: CDU70/0-1/2HP	Flow, rated	: 20.21 USgpm
Service	:	Stages	: 1	Head, rated	: 42.98 ft
Quantity	: 1	Speed	: 3450 rpm	NPSH required	: 7.64 ft
Quote number	: 831041	Based on curve number	: CD-C610-9309	Fluid density	: 1.000 / 1.000 SG
Date last saved	: 03 Aug 2018 8:37 AM	Efficiency	: 40.35 %	Viscosity	: 1.00 cP
		Power, rated	: 0.54 hp	Cq/Ch/Ce/Cn [ANSI/HI 9.6.7-2010]	: 1.00 / 1.00 / 1.00 / 1.00

#### CDU70/1-3/4 HP

Nominal Speed: 3450 RPM

Size: 1 x 1 1/4 x 4 1/2



Item number	: 001	Product Description	: CDU70/1-3/4HP	Flow, rated	: 32.50 USgpm
Service	:	Stages	: 1	Head, rated	: 50.59 ft
Quantity	: 1	Speed	: 3450 rpm	NPSH required	: 9.19 ft
Quote number	: 831041	Based on curve number	: CD-C601-9309	Fluid density	: 1.000 / 1.000 SG
Date last saved	: 03 Aug 2018 8:56 AM	Efficiency	: 58.81 %	Viscosity	: 1.00 cP
		Power, rated	: 0.71 hp	Cq/Ch/Ce/Cn [ANSI/HI 9.6.7-2010]	: 1.00 / 1.00 / 1.00 / 1.00

Model CDU

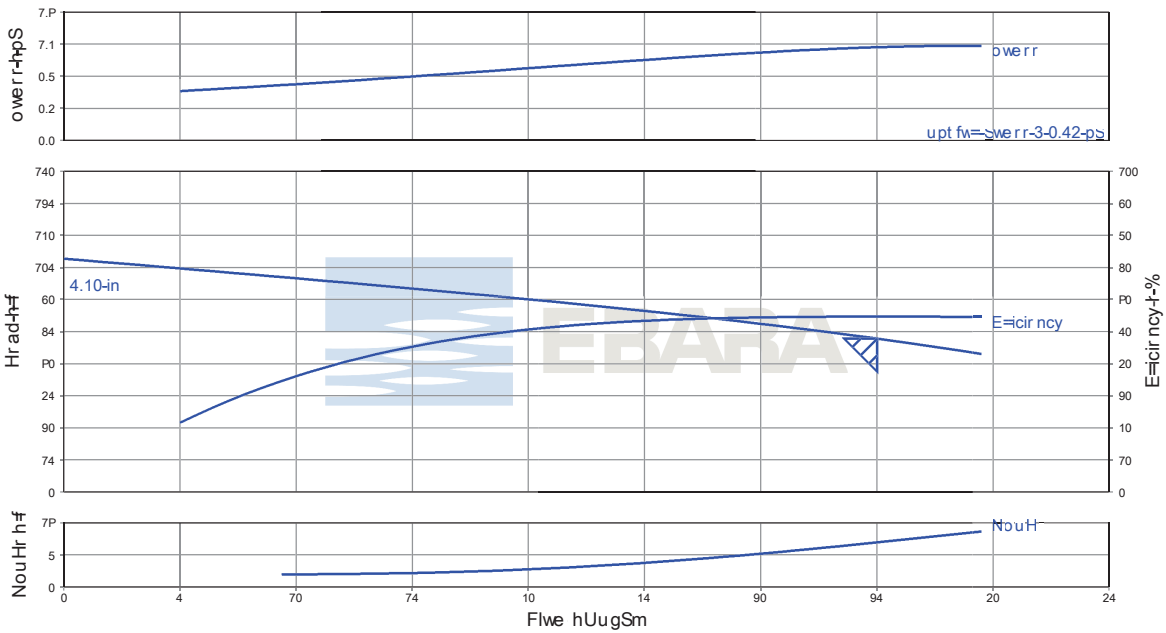
EBARA Stainless Steel Centrifugal Pumps

Performance Curves

CDU70/3-1½ HP

Nominal Speed: 3450 RPM

Size: 1 x 1¼ x 5³/₁₆

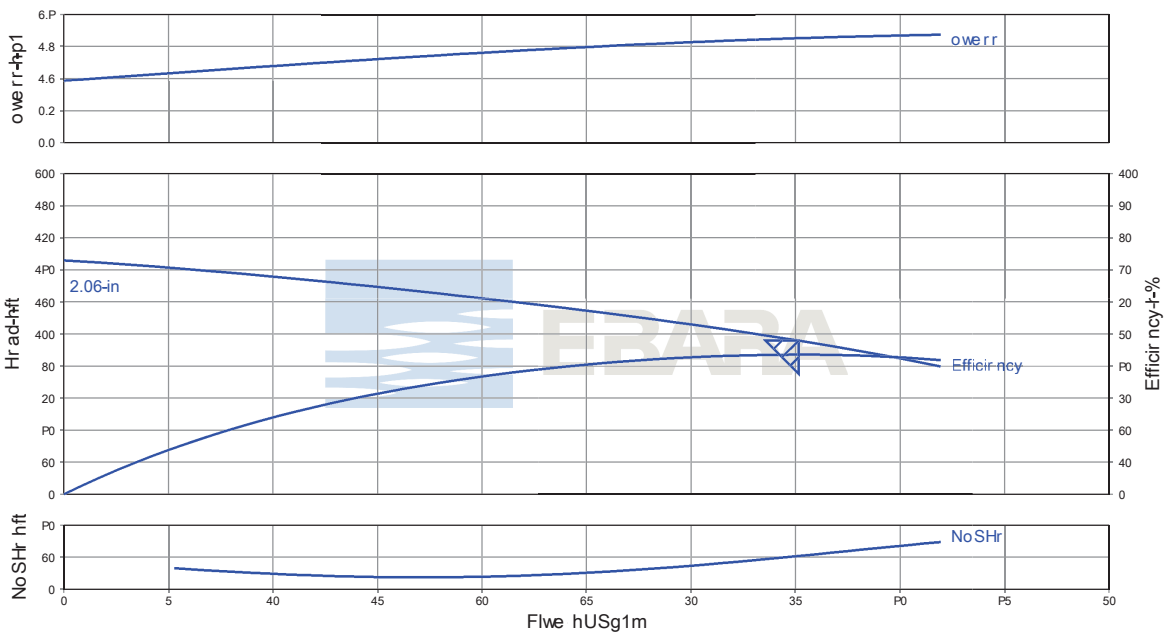


Item number	: 001	Product Description	: CDU70/3-1.5HP	Flow, rated	: 35.02 USgpm
Service	:	Stages	: 1	Head, rated	: 71.66 ft
Quantity	: 1	Speed	: 3450 rpm	NPSH required	: 11.10 ft
Quote number	: 831041	Based on curve number	: CD-C602-9309	Fluid density	: 1.000 / 1.000 SG
Date last saved	: 03 Aug 2018 8:57 AM	Efficiency	: 54.62 %	Viscosity	: 1.00 cP
		Power, rated	: 1.16 hp	Cq/Ch/Ce/Cn [ANSI/HI 9.6.7-2010]	: 1.00 / 1.00 / 1.00 / 1.00

CDU70/5A- 2 HP

Nominal Speed: 3450 RPM

Size: 1 x 1¼ x 6



Item number	: 001	Product Description	: CDU70/5A-2HP	Flow, rated	: 35.15 USgpm
Service	:	Stages	: 1	Head, rated	: 95.77 ft
Quantity	: 1	Speed	: 3450 rpm	NPSH required	: 20.71 ft
Quote number	: 831041	Based on curve number	: CD-C603-9309-A	Fluid density	: 1.000 / 1.000 SG
Date last saved	: 03 Aug 2018 8:59 AM	Efficiency	: 43.51 %	Viscosity	: 1.00 cP
		Power, rated	: 1.95 hp	Cq/Ch/Ce/Cn [ANSI/HI 9.6.7-2010]	: 1.00 / 1.00 / 1.00 / 1.00

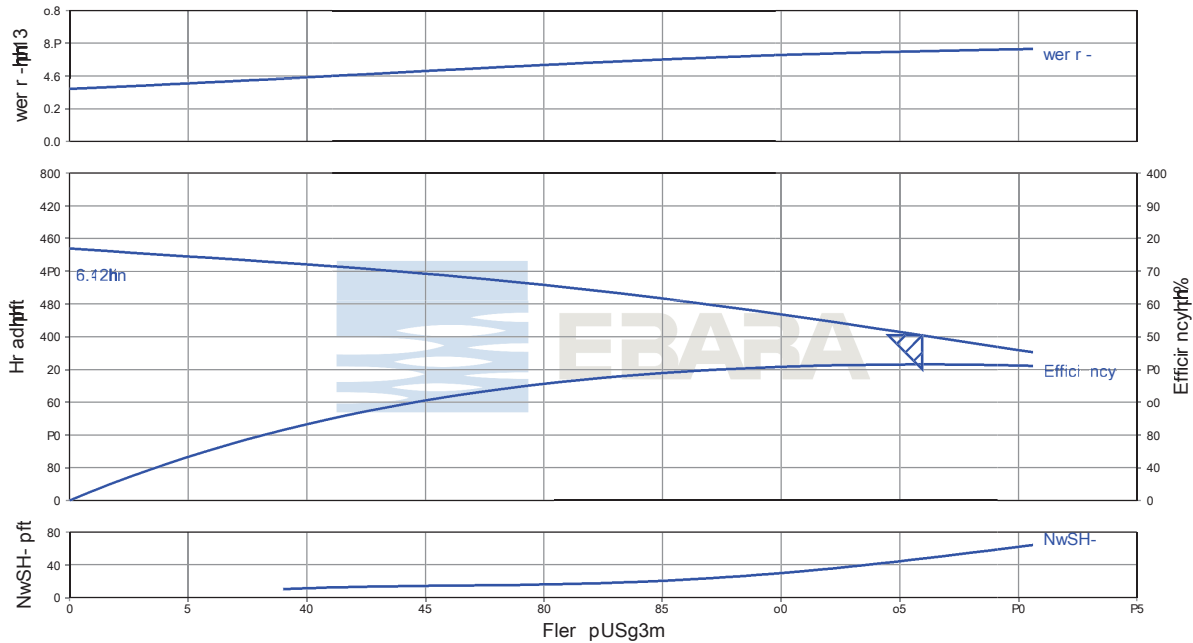
## Model CDU Performance Curves

## EBARA Stainless Steel Centrifugal Pumps

**CDU70/5B-2HP**

**Nominal Speed: 3450 RPM**

**Size: 1 x 1<sup>1</sup>/<sub>4</sub> x 6<sup>3</sup>/<sub>16</sub>**

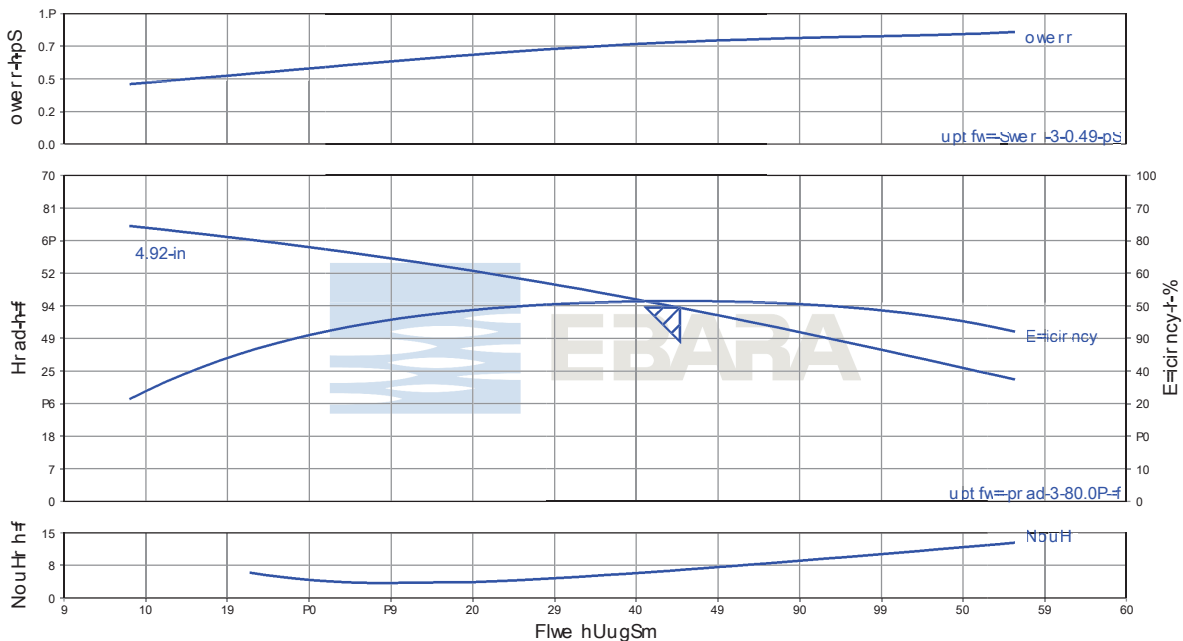


Item number	: 001	Product Description	: CDU70/5B-2HP	Flow, rated	: 35.95 USGpm
Service	:	Stages	: 1	Head, rated	: 100.8 ft
Quantity	: 1	Speed	: 3450 rpm	NPSH required	: 11.83 ft
Quote number	: 831041	Based on curve number	: CD-C603-9309-B	Fluid density	: 1.000 / 1.000 SG
Date last saved	: 03 Aug 2018 9:00 AM	Efficiency	: 41.51 %	Viscosity	: 1.00 cP
		Power, rated	: 2.20 hp	Cq/Ch/Ce/Cn [ANSI/HI 9.6.7-2010]	: 1.00 / 1.00 / 1.00 / 1.00

**CDU120/1 1HP**

**Nominal Speed: 3450 RPM**

**Size: 1 x 1<sup>1</sup>/<sub>4</sub> x 4<sup>1</sup>/<sub>2</sub>**



Item number	: 001	Product Description	: CDU120/1-1HP	Flow, rated	: 42.66 USGpm
Service	:	Stages	: 1	Head, rated	: 53.45 ft
Quantity	: 1	Speed	: 3450 rpm	NPSH required	: 6.84 ft
Quote number	: 831041	Based on curve number	: CD-C604-9309	Fluid density	: 1.000 / 1.000 SG
Date last saved	: 03 Aug 2018 9:01 AM	Efficiency	: 61.40 %	Viscosity	: 1.00 cP
		Power, rated	: 0.94 hp	Cq/Ch/Ce/Cn [ANSI/HI 9.6.7-2010]	: 1.00 / 1.00 / 1.00 / 1.00

## Model CDU

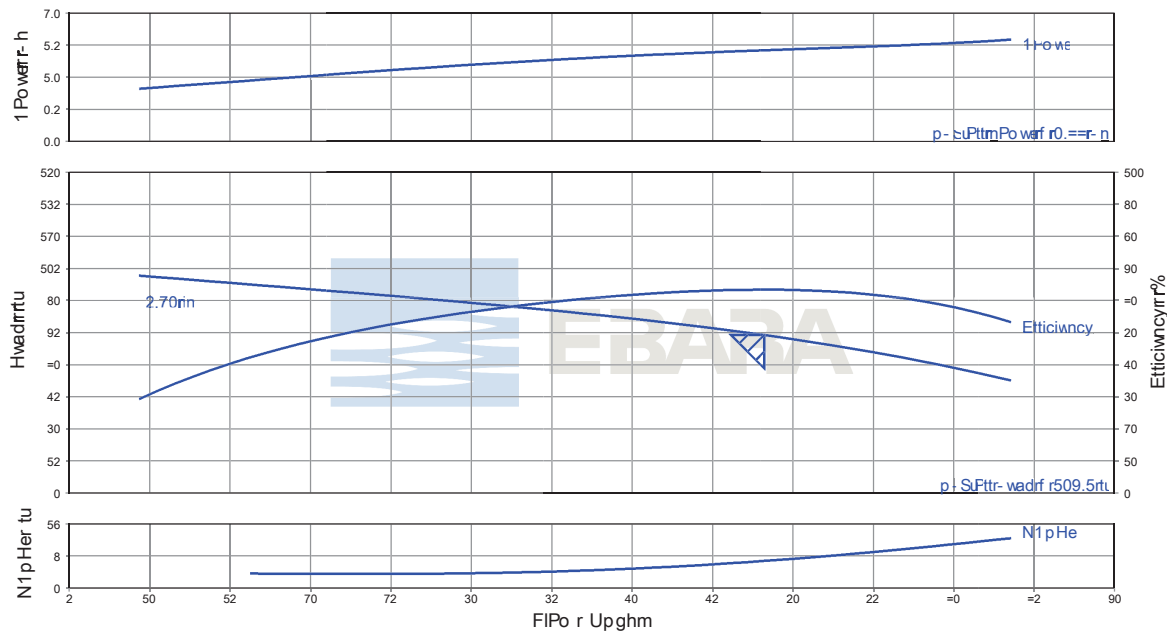
## EBARA Stainless Steel Centrifugal Pumps

### Performance Curves

**CDU120/3-1 1/2 HP**

**Nominal Speed: 3450 RPM**

**Size: 1 x 1 1/4 x 5 3/16**

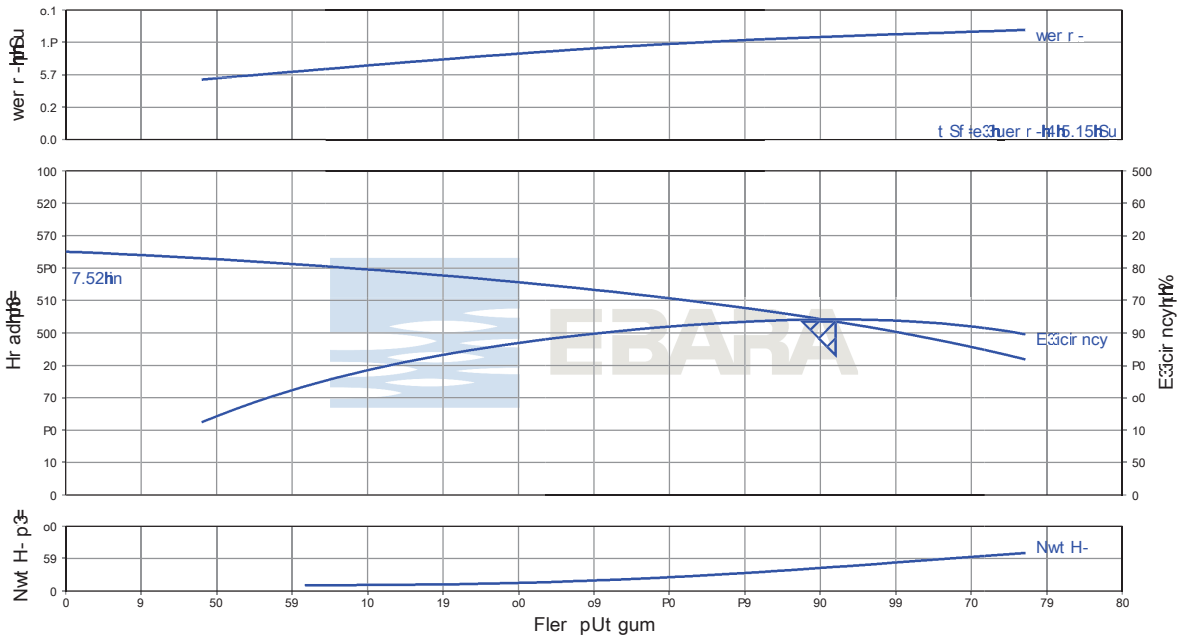


Item number	: 001	Product Description	: CDU120/3-1.5HP	Flow, rated	: 48.21 USgpm
Service	:	Stages	: 1	Head, rated	: 73.81 ft
Quantity	: 1	Speed	: 3450 rpm	NPSH required	: 7.57 ft
Quote number	: 831041	Based on curve number	: CD-C605-9309	Fluid density	: 1.000 / 1.000 SG
Date last saved	: 03 Aug 2018 9:02 AM	Efficiency	: 63.37 %	Viscosity	: 1.00 cP
		Power, rated	: 1.42 hp	Cq/Ch/Ce/Cn [ANSI/HI 9.6.7-2010]	: 1.00 / 1.00 / 1.00 / 1.00

**CDU120/5- 3HP**

**Nominal Speed: 3450 RPM**

**Size: 1 x 1 1/4 x 6 3/16**



Item number	: 001	Product Description	: CDU120/5-3HP	Flow, rated	: 50.99 USgpm
Service	:	Stages	: 1	Head, rated	: 107.0 ft
Quantity	: 1	Speed	: 3450 rpm	NPSH required	: 11.11 ft
Quote number	: 831041	Based on curve number	: CD-C606-9309	Fluid density	: 1.000 / 1.000 SG
Date last saved	: 03 Aug 2018 9:03 AM	Efficiency	: 54.14 %	Viscosity	: 1.00 cP
		Power, rated	: 2.54 hp	Cq/Ch/Ce/Cn [ANSI/HI 9.6.7-2010]	: 1.00 / 1.00 / 1.00 / 1.00



## Model CDU

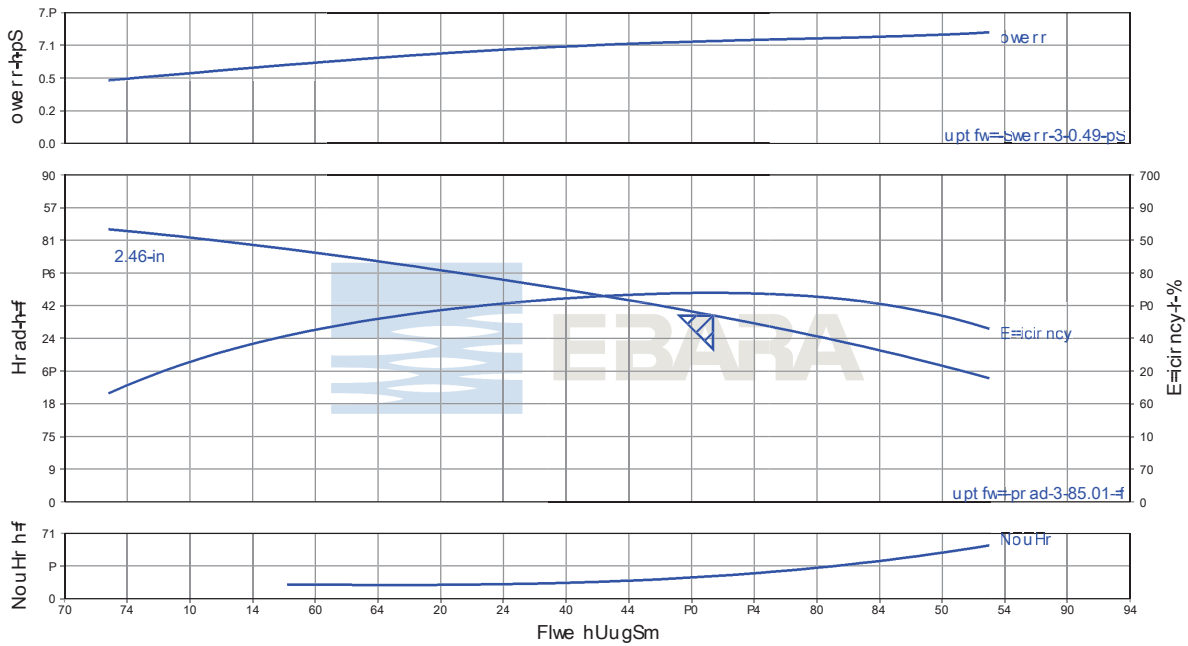
## EBARA Stainless Steel Centrifugal Pumps

### Performance Curves

**CDU200/1-1½ HP**

**Nominal Speed: 3450 RPM**

**Size: 1 x 1½ x 4½**

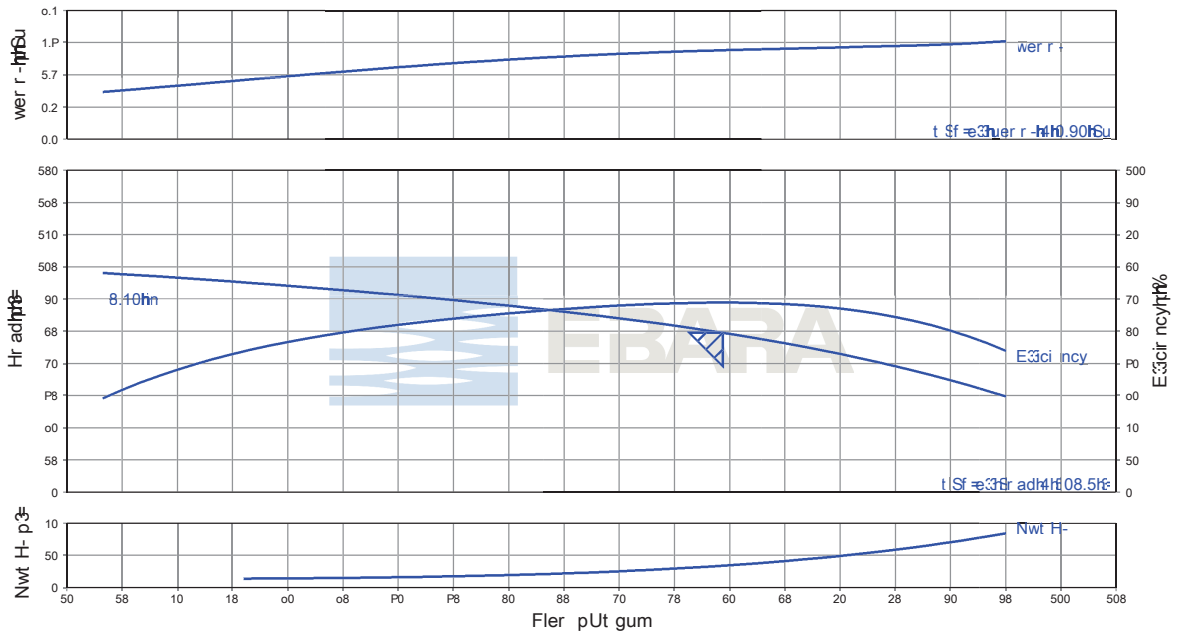


Item number	: 001	Product Description	: CDU200/1-1.5HP	Flow, rated	: 61.72 USgpm
Service	:	Stages	: 1	Head, rated	: 51.28 ft
Quantity	: 1	Speed	: 3450 rpm	NPSH required	: 4.11 ft
Quote number	: 831041	Based on curve number	: CD-C607-9309	Fluid density	: 1.000 / 1.000 SG
Date last saved	: 03 Aug 2018 9:03 AM	Efficiency	: 63.88 %	Viscosity	: 1.00 cP
		Power, rated	: 1.25 hp	Cq/Ch/Ce/Cn [ANSI/HI 9.6.7-2010]	: 1.00 / 1.00 / 1.00 / 1.00

**CDU200/3-3 HP**

**Nominal Speed: 3450 RPM**

**Size: 1 x 1½ x 5³/₁₆**



Item number	: 001	Product Description	: CDU200/3-3HP	Flow, rated	: 69.36 USgpm
Service	:	Stages	: 1	Head, rated	: 74.19 ft
Quantity	: 1	Speed	: 3450 rpm	NPSH required	: 6.75 ft
Quote number	: 831041	Based on curve number	: CD-C608-9309	Fluid density	: 1.000 / 1.000 SG
Date last saved	: 03 Aug 2018 9:04 AM	Efficiency	: 58.85 %	Viscosity	: 1.00 cP
		Power, rated	: 2.21 hp	Cq/Ch/Ce/Cn [ANSI/HI 9.6.7-2010]	: 1.00 / 1.00 / 1.00 / 1.00

Model CDU

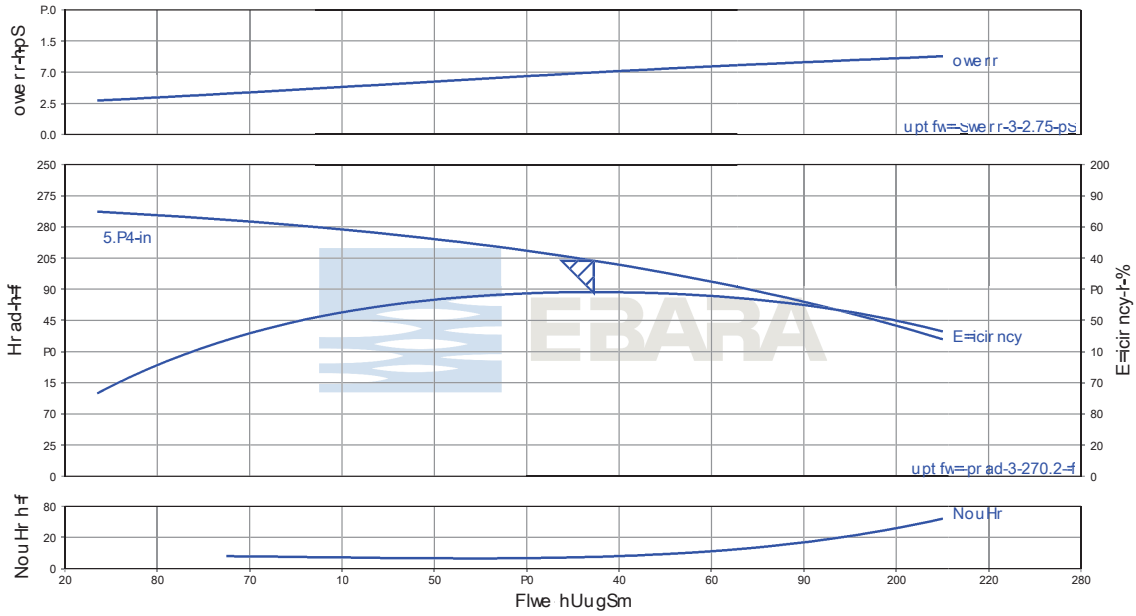
EBARA Stainless Steel Centrifugal Pumps

Performance Curves

CDU200/5-3HP

Nominal Speed: 3450 RPM

Size: 1 x 1 1/2 x 5 11/16



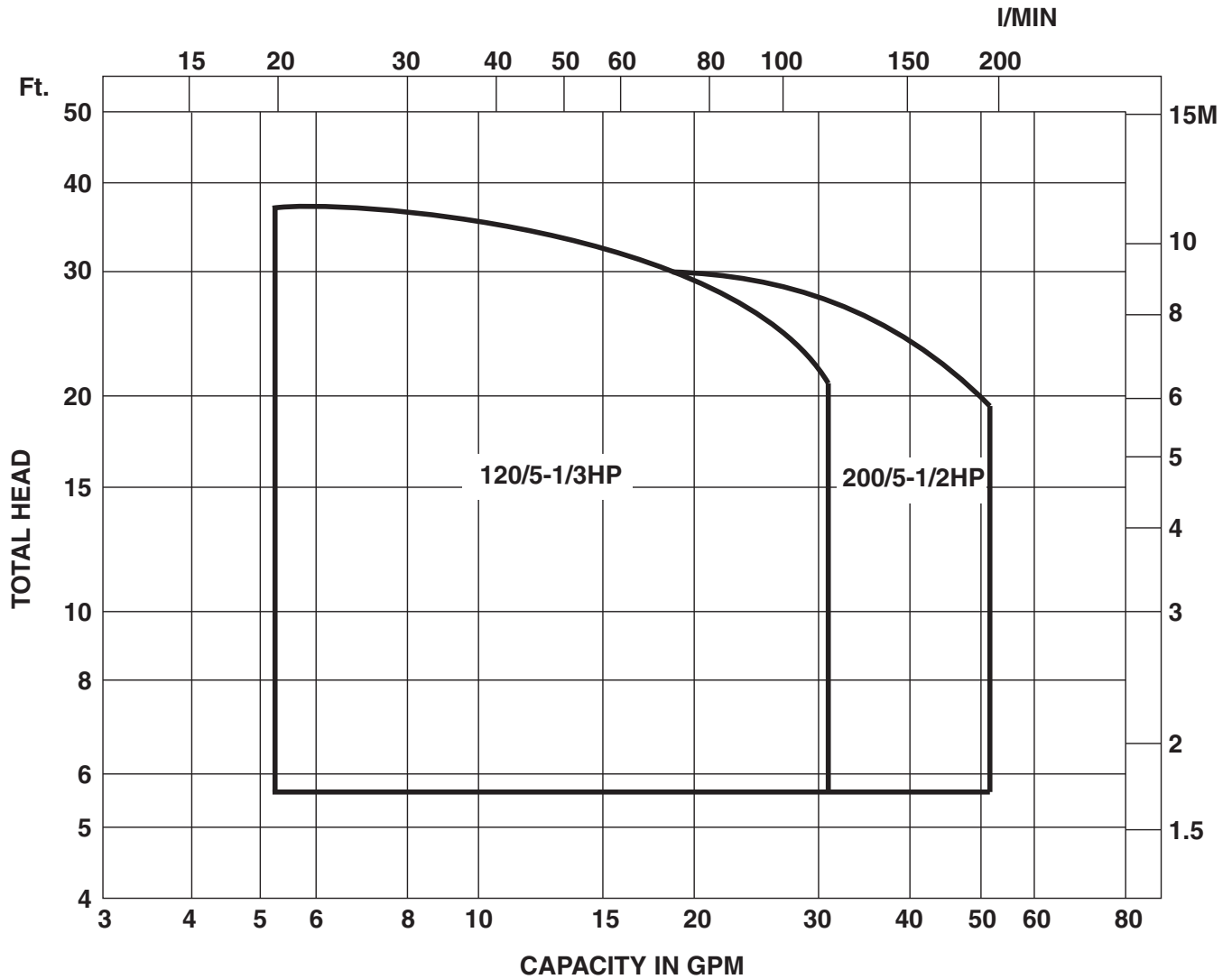
Item number	: 001	Product Description	: CDU200/5-3HP	Flow, rated	: 67.25 USgpm
Service	:	Stages	: 1	Head, rated	: 103.7 ft
Quantity	: 1	Speed	: 3450 rpm	NPSH required	: 3.74 ft
Quote number	: 831041	Based on curve number	: CD-C609-9309	Fluid density	: 1.000 / 1.000 SG
Date last saved	: 03 Aug 2018 9:05 AM	Efficiency	: 59.06 %	Viscosity	: 1.00 cP
		Power, rated	: 2.98 hp	Cq/Ch/Ce/Cn [ANSI/HI 9.6.7-2010]	: 1.00 / 1.00 / 1.00 / 1.00

Model CDU

EBARA Stainless Steel Centrifugal Pumps

Selection chart

Nominal Speed 1725 RPM



Model CDU

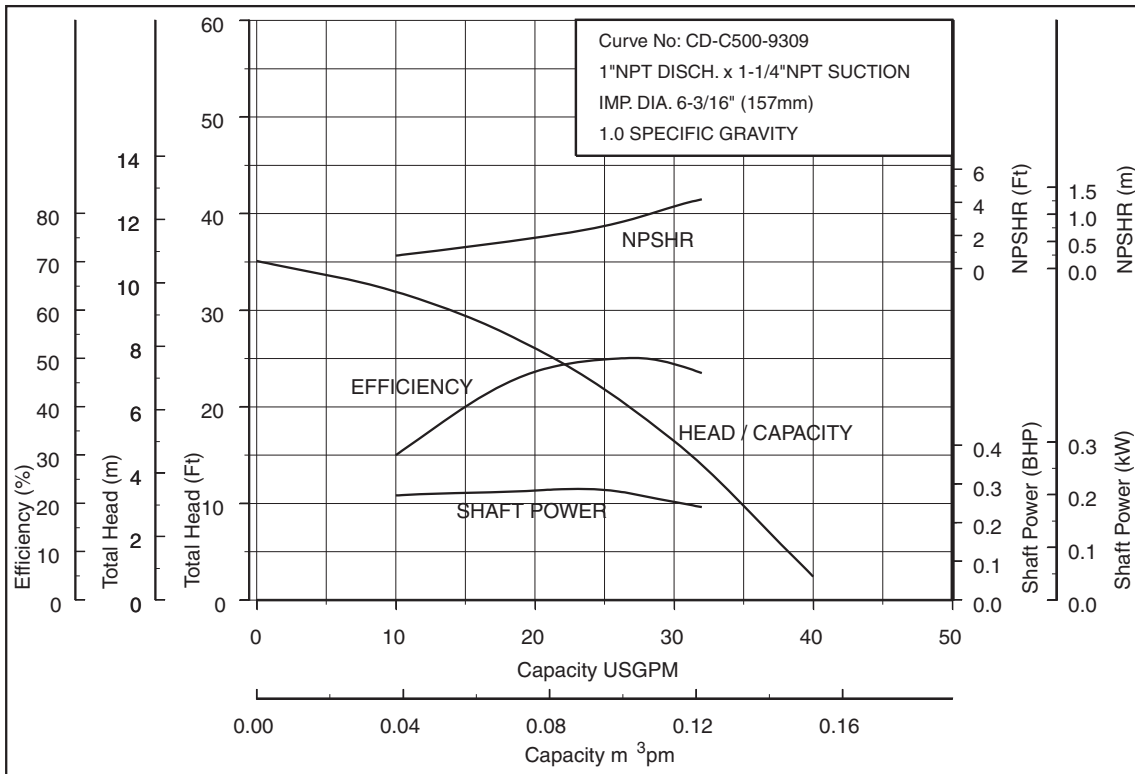
EBARA Stainless Steel Centrifugal Pumps

Performance Curves

CDU4 120/5-1/3 HP

Nominal Speed: 1725 RPM

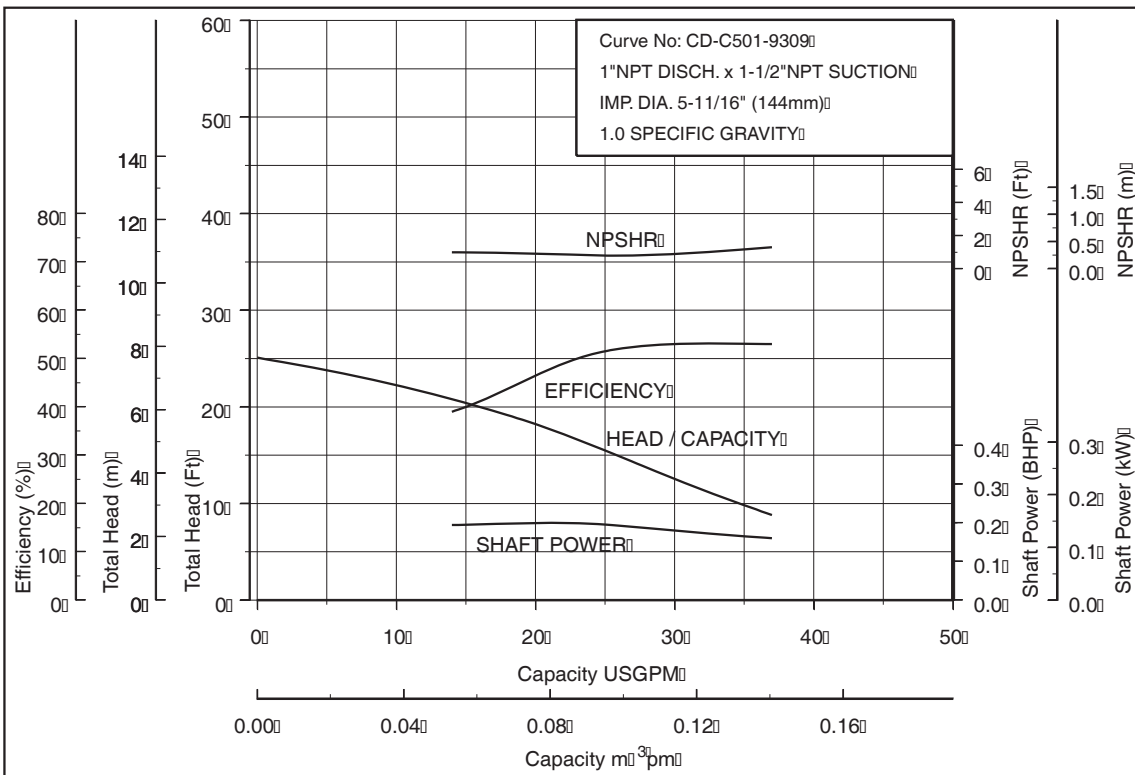
Size: 1 x 1 1/4 x 6 3/16



CDU4 200/5-1/2 HP

Nominal Speed: 1725 RPM

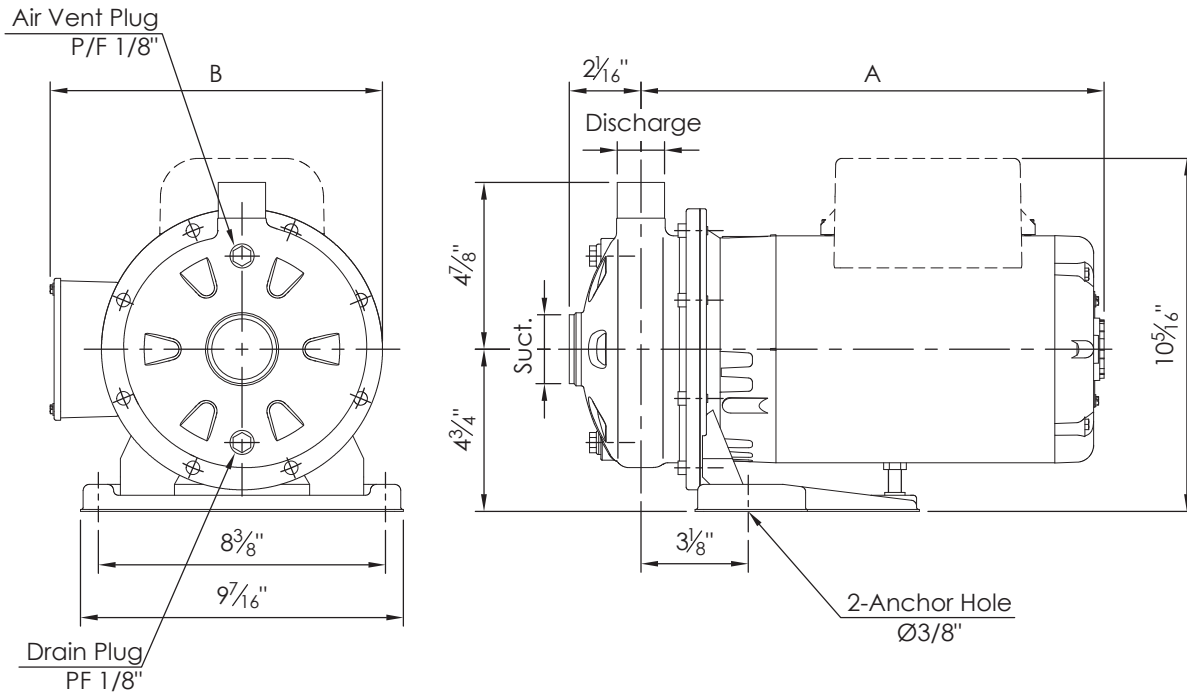
Size: 1 x 1 1/2 x 5 11/16



**Model CDU**

**EBARA Stainless Steel Centrifugal Pumps**

**Pump Dimensions**



**Model CDU, 2-Pole Motor**

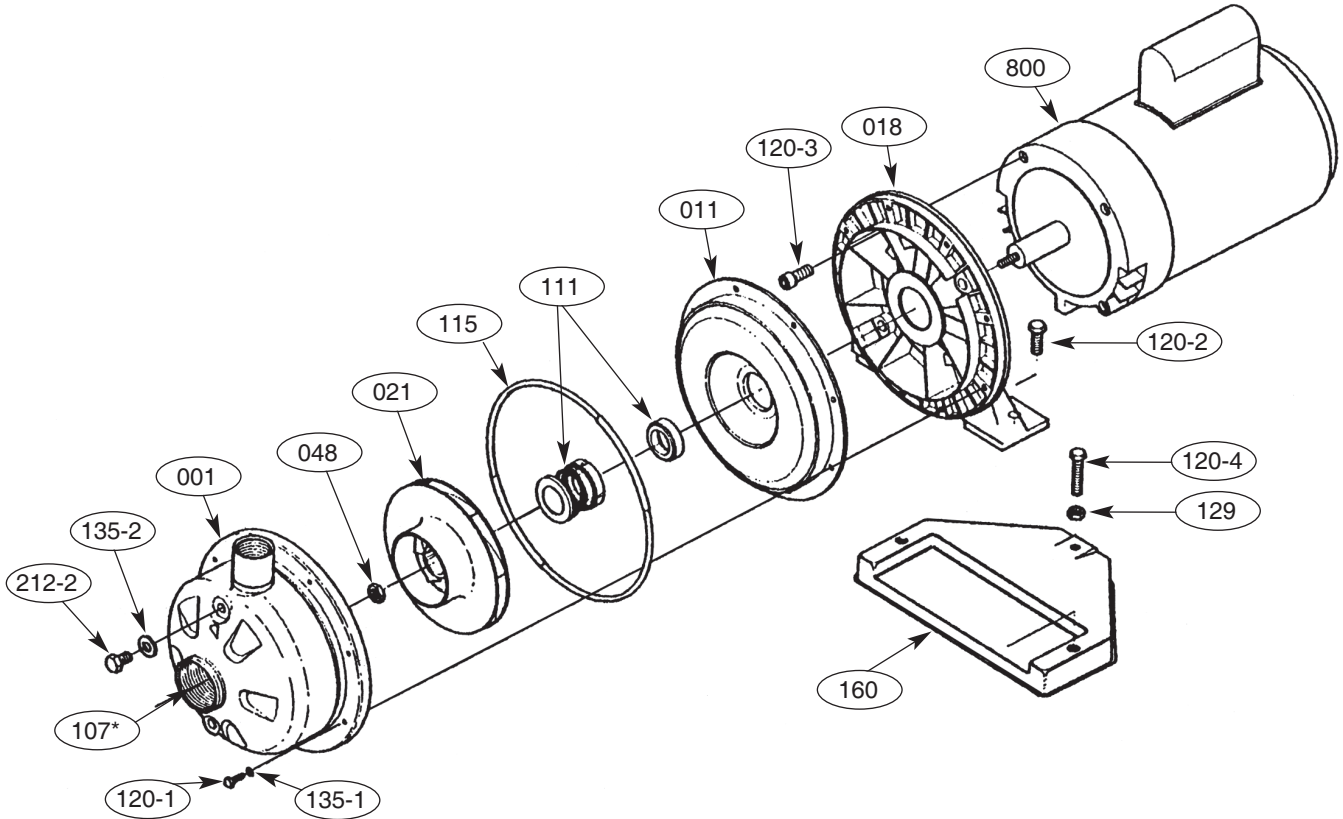
Model	Size	Pump Size – NPT (Inch)		Dimension (Inch)	Unit Weight (lbs.)			
		Suction	Discharge	A	Single Phase		Three Phase	
					ODP	TEFC	ODP	TEFC
CDU70/1-3/4HP	1 x 1 <sup>1</sup> / <sub>4</sub> x 4 <sup>1</sup> / <sub>2</sub>	1 <sup>1</sup> / <sub>4</sub>	1	13 <sup>1</sup> / <sub>8</sub> Max.	36	41	31	31
CDU70/3-1 <sup>1</sup> / <sub>2</sub> HP	1 x 1 <sup>1</sup> / <sub>4</sub> x 5 <sup>3</sup> / <sub>16</sub>	1 <sup>1</sup> / <sub>4</sub>	1	13 <sup>9</sup> / <sub>16</sub> Max.	47	50	39	39
CDU70/5-2HP	1 x 1 <sup>1</sup> / <sub>4</sub> x 6 <sup>3</sup> / <sub>16</sub>	1 <sup>1</sup> / <sub>4</sub>	1	14 <sup>7</sup> / <sub>16</sub> Max.	51	58	44	48
CDU120/1-1HP	1 x 1 <sup>1</sup> / <sub>4</sub> x 4 <sup>1</sup> / <sub>2</sub>	1 <sup>1</sup> / <sub>4</sub>	1	13 <sup>9</sup> / <sub>16</sub> Max.	41	46	33	32
CDU120/3-1 <sup>1</sup> / <sub>2</sub> HP	1 x 1 <sup>1</sup> / <sub>4</sub> x 5 <sup>3</sup> / <sub>16</sub>	1 <sup>1</sup> / <sub>4</sub>	1	13 <sup>9</sup> / <sub>16</sub> Max.	47	50	39	39
CDU120/5-3HP	1 x 1 <sup>1</sup> / <sub>4</sub> x 6 <sup>3</sup> / <sub>16</sub>	1 <sup>1</sup> / <sub>4</sub>	1	14 <sup>7</sup> / <sub>16</sub> Max.	59	66	51	60
CDU200/1-1 <sup>1</sup> / <sub>2</sub> HP	1 x 1 <sup>1</sup> / <sub>2</sub> x 4 <sup>1</sup> / <sub>2</sub>	1 <sup>1</sup> / <sub>2</sub>	1	13 <sup>9</sup> / <sub>16</sub> Max.	47	50	39	39
CDU200/3-3HP	1 x 1 <sup>1</sup> / <sub>2</sub> x 5 <sup>3</sup> / <sub>16</sub>	1 <sup>1</sup> / <sub>2</sub>	1	14 <sup>7</sup> / <sub>16</sub> Max.	58	65	50	59
CDU200/5-3HP	1 x 1 <sup>1</sup> / <sub>2</sub> x 5 <sup>11</sup> / <sub>16</sub>	1 <sup>1</sup> / <sub>2</sub>	1	14 <sup>7</sup> / <sub>16</sub> Max.	58	65	50	59

**Model CDU, 4-Pole Motor**

Model	Size	Pump Size – NPT (Inch)		Dimension (Inch)	Unit Weight (lbs.)			
		Suction	Discharge	A	Single Phase		Three Phase	
					ODP	TEFC	ODP	TEFC
CDU4120/5-1/3HP	1 x 1 <sup>1</sup> / <sub>4</sub> x 6 <sup>3</sup> / <sub>16</sub>	1 <sup>1</sup> / <sub>4</sub>	1	13 <sup>11</sup> / <sub>16</sub>	32	31	31	30
CDU4200/5-1/2HP	1 x 1 <sup>1</sup> / <sub>2</sub> x 5 <sup>11</sup> / <sub>16</sub>	1 <sup>1</sup> / <sub>2</sub>	1	14 <sup>11</sup> / <sub>16</sub>	35	31	31	31

**Model CDU  
Sectional View**

**EBARA Stainless Steel Centrifugal Pumps**



Part No.	Part Name	Material	No. for 1 Unit
001	Casing	304L Stainless	1
011	Casing cover	304L Stainless	1
018	Bracket	Aluminum	1
021	Impeller	304L Stainless	1
048	Impeller nut	304L Stainless	1
107*	Casing ring (*CDU 70 series only)	Viton	1
111	Mechanical seal	—	1
115	O-Ring	Viton	1
120-1	Bolt	304L Stainless	8
120-2	Bolt	304L Stainless	2
120-3	Bolt	304L Stainless	4
120-4	Bolt	304L Stainless	1
129	Nut	304L Stainless	1
135-1	Washer	304L Stainless	8
135-2	Washer	304L Stainless	2
160	Base	Steel	1
212-2	Plug	304L Stainless	2
800	Motor	—	1